

Confetti Cake

By Charisma Horton

CH-413



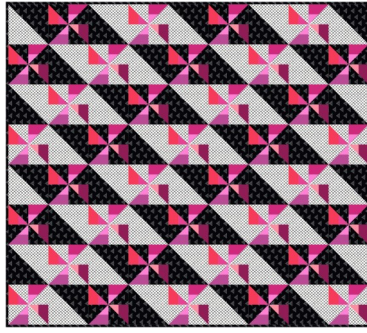
Banana Split acrylic templates
available for purchase!



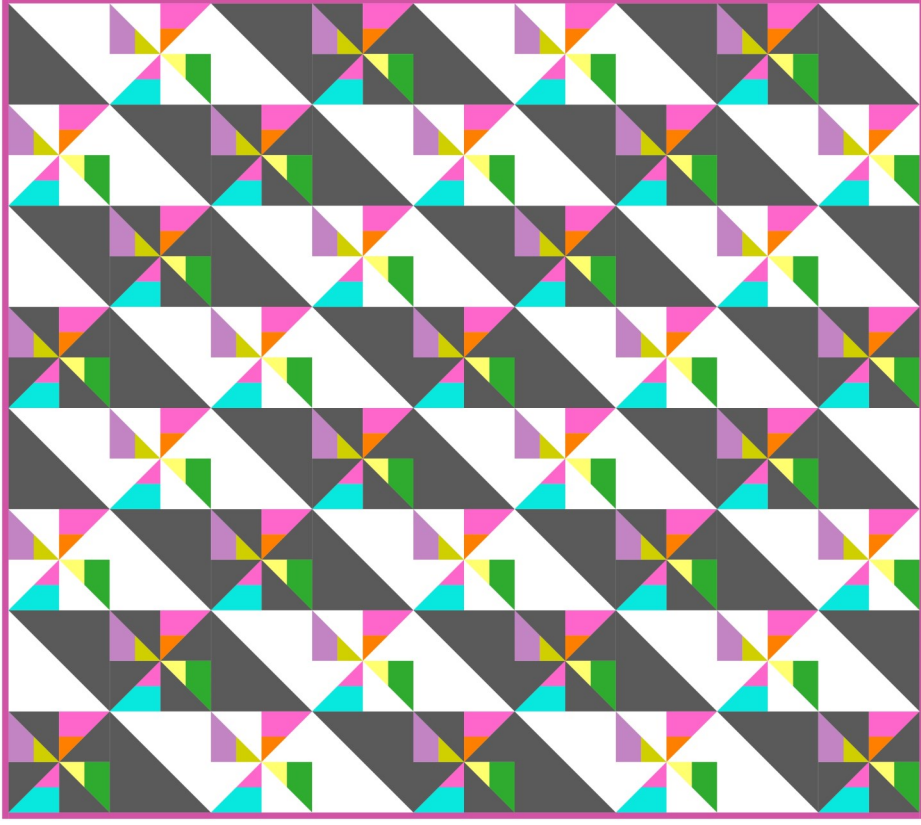
CONFETTI CAKE

MATERIALS:

White	2 ¼ yds
Black	2 ¼ yds
2 ½" color strips	22 strips or 1 strip roll
Binding	8 strips or ⅔ yd
Backing	4 yds



Use a pink variety
strip roll, and some
black and white
print yardage.



Charisma Horton © 2022. All text, images and patterns protected. All rights reserved.
No part of this pattern may be reproduced in any form whatsoever. Personal use
only. No commercial use without express written consent from the author. Thanks.



Email: charismah@msn.com
Website: charismascorner.com
Instagram: [@charismahorton](https://www.instagram.com/charismahorton)
YouTube: [charisma's corner](https://www.youtube.com/channel/UC...)

PDF
Not For Resale

2 ½" Strip Roll Friendly!



Banana Split Series

64" x 72"

CONFETTI CAKE

Quilt: 64" x 72"

Blocks: 8" x 8"

Thank you so much for supporting my small business. I truly appreciate it. Confetti Cake is a staple when you are raising kids, am I right? A plain cake with some confetti makes everything fun and it simply tastes better, at least my kids felt that way. I love the simple fun of the design I hope you will share your projects with me. I love to see them, #charismascorner. Be blessed,

Charisma

PROJECT NOTES:

- Wof = width of fabric
- Use 1/4" seam allowance and press as desired.
- Materials and cutting list assumes 40" of usable fabric width.

CUT:

White 5 @ 8 7/8" x wof, subcut:
18 @ 8 7/8" x 8 7/8"

5 @ 4 7/8" x wof, subcut:
36 @ 4 7/8" x 4 7/8"

Black 5 @ 8 7/8" x wof, subcut:
18 @ 8 7/8" x 8 7/8"

5 @ 4 7/8" x wof, subcut:
36 @ 4 7/8" x 4 7/8"

Colors 22 @ 2 1/2" x wof

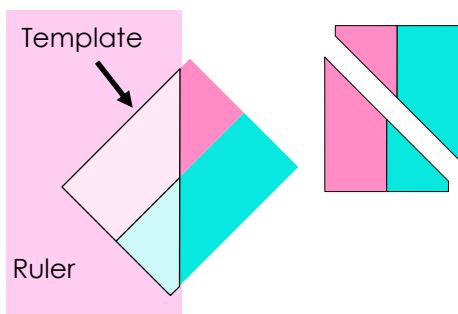
Binding 8 @ 2 1/2" x wof

SEW:

1. Sew 2 color 2 1/2" strips together lengthwise for a strip set. Make 11 strip sets.
2. From the strip sets cut 72 sections at 5 1/4" wide.

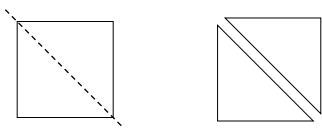


3. Tape the template to the bottom of a ruler with the diagonal edge (noted on the template) along the ruler edge and facing up so you can see the printing through the ruler.

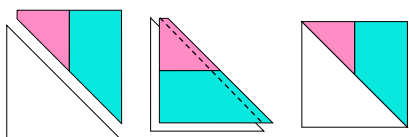


Note: This creates triangles with 1 dog ear tip already cut off.

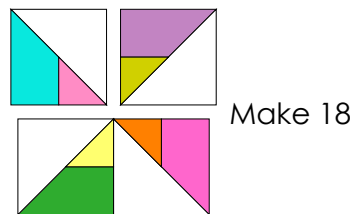
4. Cut the 72 sections in half diagonally (for 144 triangles) with the Triangle Template by laying the ruler over a $5\frac{1}{4}$ " wide section, lining up the template center seam line and outer edges with the fabric seam line and outer edges. Fabric should be right side up. Cut along the ruler's edge.
5. Cut the $4\frac{7}{8}$ " white and black squares in half diagonally.



6. Sew a white triangle to a striped triangle by aligning the right angles, for a $4\frac{1}{2}$ " unit. Make 72.



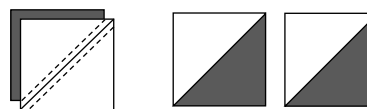
7. Repeat step 6 with the black triangles. Make 72.
8. Sew 4 white triangle units together for an $8\frac{1}{2}$ " pinwheel block. Note that the small color triangles are in the center. Make 18.



9. Repeat step 8 with the black triangle units. Make 18.



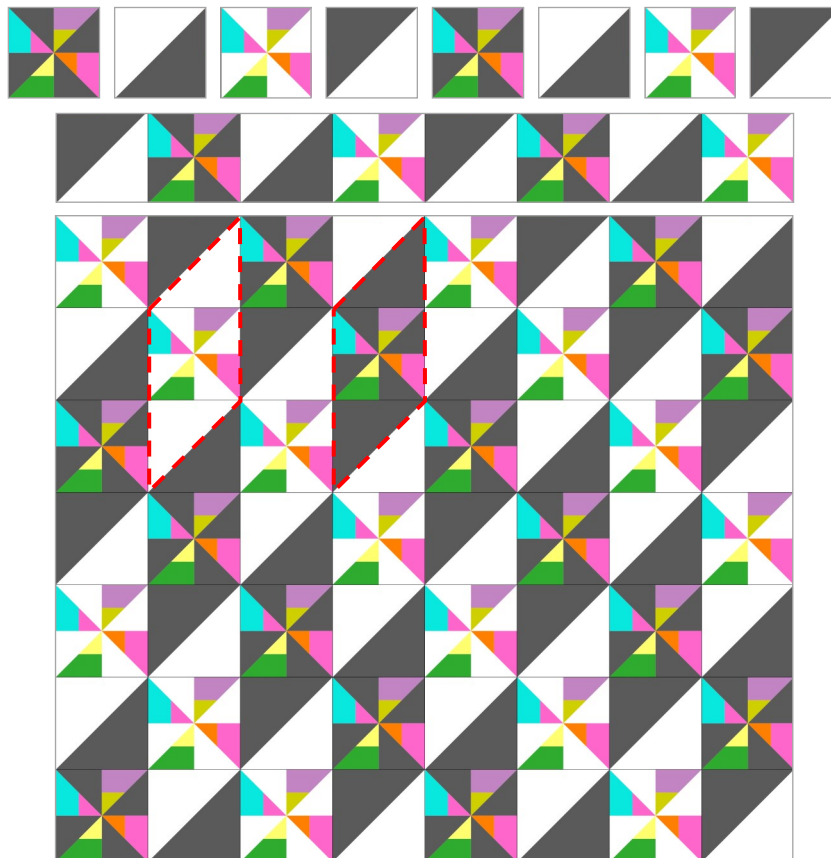
10. Draw a diagonal line on the back of the white $8\frac{7}{8}$ " squares.
11. Pair them with the black $8\frac{7}{8}$ " squares, right sides together. Sew $\frac{1}{4}$ " on each side of the line and cut on the line for $8\frac{1}{2}$ " HSTs (half square triangles). Make 36.



12. Arrange the blocks according to the Quilt Diagram. Note the white and black pinwheel blocks run diagonally. The orientation of the HSTs also run diagonally. The secondary shapes are outlined with red dashed lines.

13. Sew into 9 rows of 8 blocks each.
14. Quilt as desired.
15. Sew the binding strips end to end and bind the quilt.

Quilt Diagram



Banana Split acrylic templates are available for purchase or use the paper template below.

Print or copy 1x for the template. Cut out on the outside line.

