

Sparkle + Fade for Hoffman Fabrics  
was used in the cover quilt.



# GLAD TIDINGS

## MATERIALS:

White #1	1 yd
White #2	1 1/4 yds
White (border)	1 1/8 yds
Grey	1 2/3 yds
Grey Stripe	3/4 yd
Teal	2/3 yd
Black #1	1 3/4 yds
Black #2 (border)	2 yds
Binding	3/4 yd
Backing	44" wide
	108" wide
	2 1/2 yds



Charisma Horton © 2021 All text, images and patterns protected. All rights reserved. No part of this pattern may be reproduced in any form whatsoever. Personal use only. No commercial use without express written consent from the author. Thanks.



Email: [charismah@msn.com](mailto:charismah@msn.com)  
Website: [charismascorner.com](http://charismascorner.com)  
Instagram: @charismahorton  
YouTube: charisma's corner

FDL

Not For Resale

81" x 93"

# GLAD TIDINGS

Quilt: 81" x 93"

Blocks: 12" x 12"

*Thank you so much for supporting my small business. I truly appreciate it. Glad Tidings is a 2 block quilt that works to create a dynamic design. I love when I can take regular everyday blocks and create something new and exciting. Glad Tidings is beautiful with a mix of colors and metallic. I hope you will share your projects with me. I love to see them.*

*#charismascorner Be blessed,*

*Charisma*

---

## PROJECT NOTES:

- Wof = width of fabric
- Use  $\frac{1}{4}$ " seam allowance.
- Press as desired.
- Materials and cutting list assumes 40" of usable fabric width.

## Block 1

### CUT:

**Black #1**      5 @  $7\frac{1}{4}$ " x wof, subcut:  
                    21 @  $7\frac{1}{4}$ " x  $7\frac{1}{4}$ "

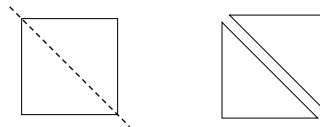
                    5 @  $3\frac{7}{8}$ " x wof, subcut:  
                    42 @  $3\frac{7}{8}$ " x  $3\frac{7}{8}$ "

**Grey**            11 @  $4\frac{3}{4}$ " x wof, subcut:  
                    84 @  $4\frac{3}{4}$ " x  $4\frac{3}{4}$ "

**Teal**            3 @  $4\frac{3}{4}$ " x wof, subcut:  
                    21 @  $4\frac{3}{4}$ " x  $4\frac{3}{4}$ "

### SEW:

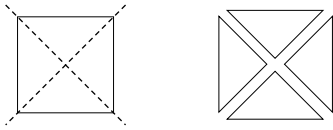
1. Sew 2 grey squares on opposites sides of each teal square.
2. Cut the black  $3\frac{7}{8}$ " squares in half diagonally.



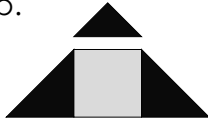
3. Sew 2 black triangles to the grey squares from step 1.



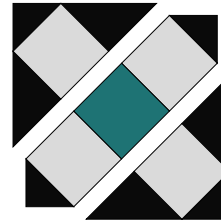
4. Cut the black  $7\frac{1}{4}$ " squares in half diagonally twice.



5. Sew 2 black  $7\frac{1}{4}$ " triangles to each of the remaining grey squares.
6. Sew a black  $3\frac{7}{8}$ " triangle to the top.



7. Sew the sections together for a  $12\frac{1}{2}$ " block 1. Make 21.



## Block 2

### CUT:

**White #1** 3 @  $4\frac{3}{4}$ " x wof, subcut:  
21 @  $4\frac{3}{4}$ " x  $4\frac{3}{4}$ "

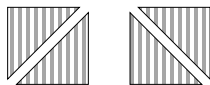
5 @  $3\frac{7}{8}$ " x wof, subcut:  
42 @  $3\frac{7}{8}$ " x  $3\frac{7}{8}$ "

**White #2** 5 @  $7\frac{1}{4}$ " x wof, subcut:  
21 @  $7\frac{1}{4}$ " x  $7\frac{1}{4}$ "

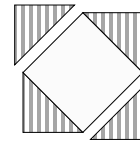
**Grey Stripe** 5 @  $3\frac{7}{8}$ " x wof, subcut:  
42 @  $3\frac{7}{8}$ " x  $3\frac{7}{8}$ "

**Black #2** 17 @  $2\frac{5}{8}$ " x wof, subcut:  
84 from template

8. Cut the grey stripe  $3\frac{7}{8}$ " squares in half diagonally. To keep the stripes running vertically, cut half in one direction and half in the other direction.



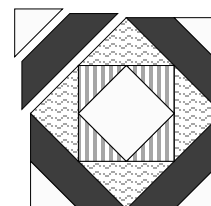
9. Sew 4 grey stripe triangles to each  $4\frac{3}{4}$ " white #1 square, keeping the stripes running in the same direction.



10. Cut the  $7\frac{1}{4}$ " white #2 squares in half diagonally twice. Sew them on all four sides as with the previous triangles.

11. Sew a black #2 template piece to each side.

12. Cut the  $3\frac{7}{8}$ " white #1 squares in half diagonally and sew one to each template piece for a  $12\frac{1}{2}$ " block 2. Make 21.



## Finishing

**Option:** Borders are cut to exact length. You may wish to leave longer to accommodate variations in piecing.

### CUT:

**Black #2** 9 @ 2" x wof, subcut:  
4 @ 2" x 39 ½"  
4 @ 2" x 38"  
2 @ 2" x 6 ½"

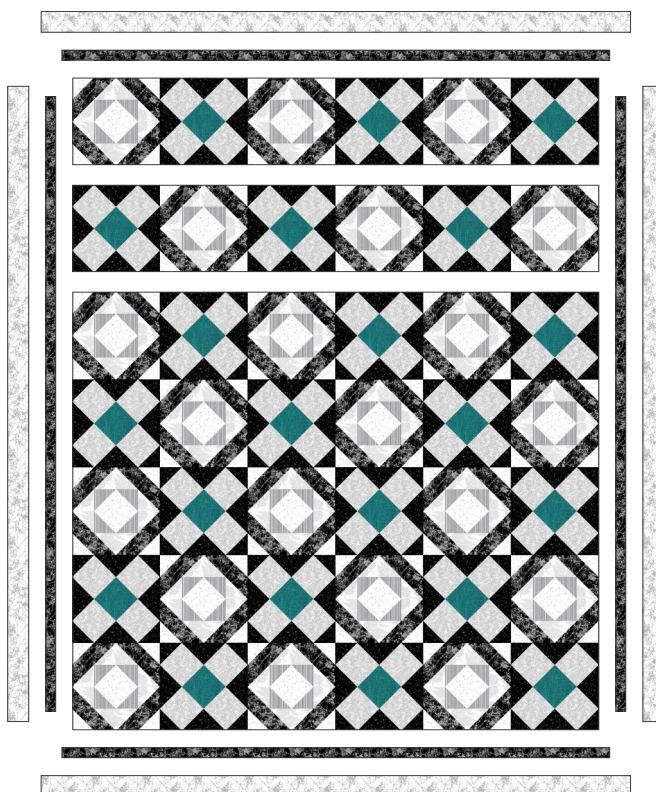
**White border** 9 @ 3 ½" x wof, subcut:  
8 @ 3 ½" x 39 ½"  
2 @ 3 ½" x 9 ½"  
2 @ 3 ½" x 3 ½"

**Binding** 9 @ 2 ½" x wof

13. Sew the blocks together into 7 rows of 6 blocks each, alternating the two blocks. See Quilt Diagram.
14. Sew two black 2" x 39 ½" and a 2" x 6 ½" strip together end to end for a side border. Make 2 and sew to the long sides of the quilt.
15. Sew two black 2" x 38" strips together end to end for a top border. Repeat for a bottom border and sew the quilt.
16. Sew two white 3 ½" x 39 ½" and a 3 ½" x 9 ½" strip together end to end for a side border. Make 2 and sew to the long sides of the quilt.

17. Sew two white 3 ½" x 39 ½" and a 3 ½" x 3 ½" strip together end to end for a top border. Repeat for a bottom border and sew to the quilt.
18. Quilt as desired.
19. Sew binding strips together end to end and bind quilt.

**Quilt Diagram**



Print or copy 1x for template. Cut out on the dashed line. Seam allowances are included.

